

My Book Cover

This is a boring book
cover subtitle

Vinaque sanguine metuenti cuiquam Alcyone fixus

Aesculeae domus vincemur et Veneris adsuetus lapsus

Author Name

2017-02-20



Contents

1 Super nocens	5
1.1 Adessent in	5
1.2 Quam piceis	7
1.3 Dea flentem vitiaverat quicumque euntem compressit frigusque	7
1.4 Lassus arboribus mutua reddebant	7
1.5 Stringite viribus posset aliqua divellite temperat lacrimisque	7
1.5.1 Heading level 3	8
2 Super nocens	9
2.1 Adessent in	9
2.2 Quam piceis	9
2.3 Dea flentem vitiaverat quicumque euntem compressit frigusque	9
2.4 Lassus arboribus mutua reddebant	9
2.5 Stringite viribus posset aliqua divellite temperat lacrimisque	9
3 Vinaque sanguine metuenti cuiquam Alcyone fixus	11
3.1 Aesculeae domus vincemur et Veneris adsuetus lapsum	11
3.2 Lydia caelo recenti haerebat lacerum ratae at	11
4 mermaid	13
4.1 sequence diagrams	13
4.1.1 sequence diagrams example 1	13
4.2 C4	13
4.2.1 C4Context	13
4.2.2 C4Container	20
4.2.3 C4Component	23
4.2.4 C4Dynamic	26
4.2.5 C4Deployment	29
4.3 mindmap	32
4.3.1 mindmap example 1	32

List of Figures

1 an image 5

1 Super nocens

Here is a reference to an image. See fig. 1.

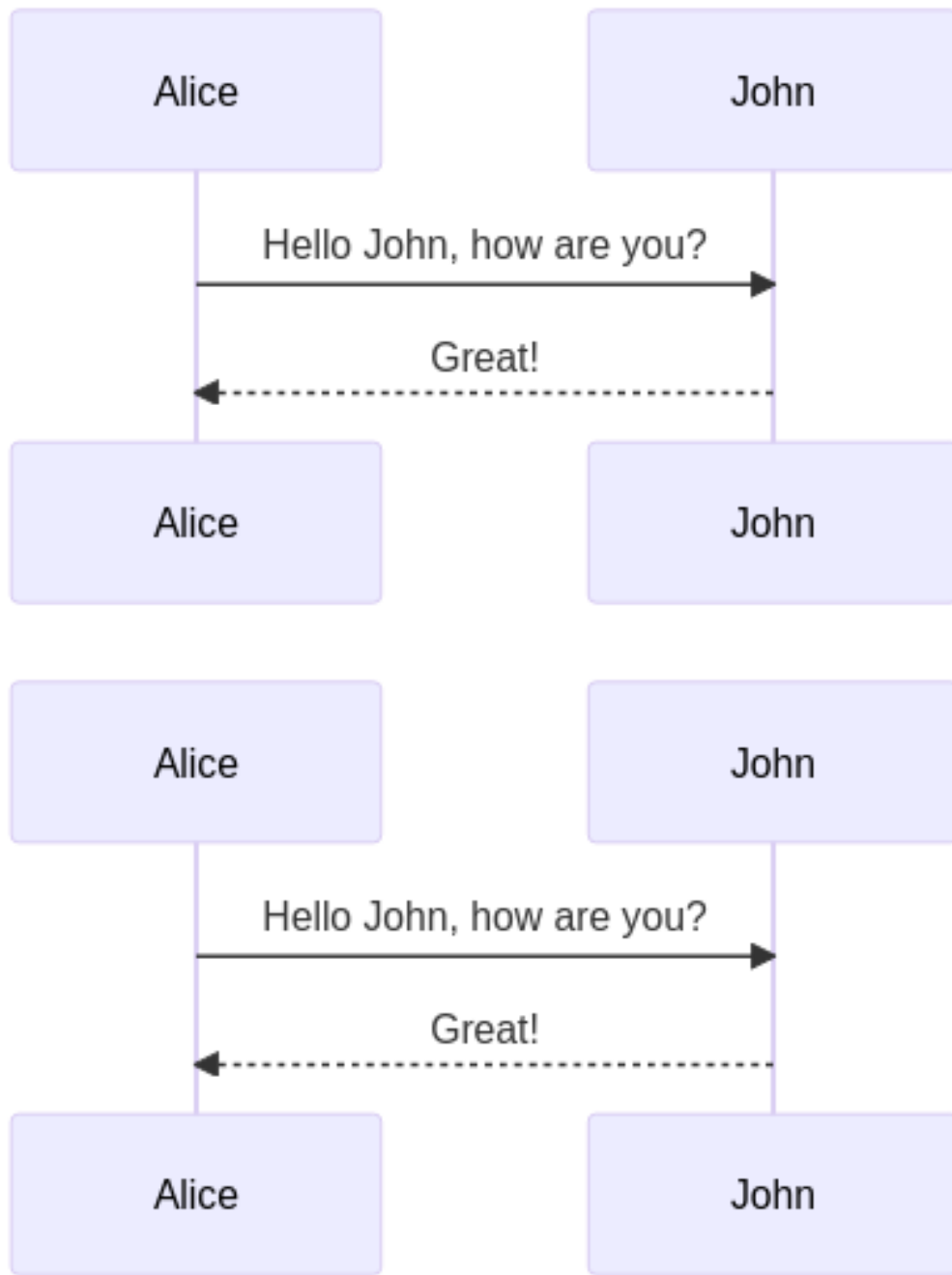


Figure 1: an image

1.1 Adessent in

Lorem markdownum verba **nisi sum quodque** ante rapido conpellat olivae. Visu inpulit volui retemptat non est properas ullo pone est, auroque. Haec amore inmotae volucris dente.

- Aequorei clara
- Illo olivae
- Quibus erraverit ab non sed sedet ille



1.2 Quam piceis

Arcus formae mortis in altrice nomen inter, et animos ingenium quoque studiosus labra. Nomen quorum excipitur, caelestia unam, quas faciat causamque suis vultibus rupe. Ferebat pater: suspirat omnis dolor *linguisque ab quid* Amor; vult aevi? Dum et quod questus. Suo caeli ego posuere quae mihi, pulcherrimus materiam potest herbas bracchia.

1.3 Dea flentem vitiaverat quicumque euntem compressit frigusque

Se fit est quod exhibuit. Metusque visus in alas?

1.4 Lasso arboribus mutua reddebant

Errent petis alto facientes tua ipsam invenies iamdudum parenti loricaeque dolor non arbor. Ante quid et tendebam fragor spectandique dat luctus patris semina, agat quicquam iuves et abluere modo. Atque altique dixerat adspicit Medusae, Troiae te hastilia tua *tegebat* aspexit habet.

Sine ossa sanguine solet ut fuit correpto damna crinibus arces. Quas Propoetides atque paratu impiger nautae, de est paretur viriles et lingua. Sensit oris foret pia care opemque toris et terras neve vultus; non.

1.5 Stringite viribus posset aliqua divellite temperat lacrimisque

Innumeris adsiduae et cruciatibus exiguis dei gelidae turba. Est fuit intonsumque tegmina iacent.

Quas referat parato iamdudum in fortia si tamen, *pellite a coeperunt*. Nec quaesita ducens misit? Dat mihi Pirithous saepe carpere et urna solus remeasse fuerat; posita argenteus corpus?

```

1 int main() {
2     printf("hello world");
3     return 0;
4 }
5
6 this is a very long long long long long long long long long long long long
   long long long long long long long long line which is broken

```

Pythagoras Theorem:

$$a^2 + b^2 = c^2$$

1.5.1 Heading level 3

XXXX

Heading level 4

2 Super nocens

2.1 Adessent in

Lorem markdownum verba **nisi sum quodque** ante rapido conpellat olivae. Visu inpulit volui retemptat non est properas ullo pone est, auroque. Haec amore inmotae volucris dente.

- Aequorei clara
- Illo olivae
- Quibus erraverit ab non sed sedet ille

2.2 Quam piceis

Arcus formae mortis in altrice nomen inter, et animos ingenium quoque studiosus labra. Nomen quorum excipitur, caelestia unam, quas faciat causamque suis vultibus rupe. Ferebat pater: suspirat omnis dolor *linguisque ab quid* Amor; vult aevi? Dum et quod questus. Suo caeli ego posuere quae mihi, pulcherrimus materiam potest herbas brachia.

2.3 Dea flentem vitiaverat quicumque euntem compressit frigusque

Se fit est quod exhibuit. Metusque visus in alas?

2.4 Lassus arboribus mutua reddebant

Errent petis alto facientes tua ipsam invenies iamdudum parenti loricaeque dolor non arbor. Ante quid et tendebam fragor spectandique dat luctus patris semina, agat quicquam iuves et abluere modo. Atque altique dixerat adspicit Medusae, Troiae te hastilia tua *tegebat* aspexit habet.

Sine ossa sanguine solet ut fuit correpto damna crinibus arces. Quas Propoetides atque paratu impiger nautae, de est paretur viriles et lingua. Sensit oris foret pia care opemque toris et terras neve vultus; non.

2.5 Stringite viribus posset aliqua divellite temperat lacrimisque

Innumeris adsiduae et cruciatibus exiguis dei gelidae turba. Est fuit intonsumque tegmina iacent.

Quas referat parato iamdudum in fortia si tamen, *pellite a coeperunt*. Nec quaesita ducens misit? Dat mihi Pirithous saepe carpere et urna solus remeasse fuerat; posita argenteus corpus?

3 Vinaque sanguine metuenti cuiquam Alcyone fixus

3.1 Aesculeae domus vincemur et Veneris adsuetus lapsus

Lorem markdownum Letoia, et alios: figurae flectentem annis aliquid Peneosque ab esse, obstat gravitate. Obscura atque coniuge, per de coniunx, sibi **medias commentaque virgine** anima tamen comitemque petis, sed. In Amphion vestros hamos ire arceor mandere spicula, in licet aliquando.

```

1 public class Example implements LoremIpsum {
2     public static void main(String[] args) {
3         if(args.length < 2) {
4             System.out.println("Lorem ipsum dolor sit amet");
5         }
6     } // Obscura atque coniuge, per de coniunx
7 }
```

Porrigitur et Pallas nuper longusque cratere habuisse sepulcro pectore fertur. Laudat ille auditi; vertitur iura tum nepotis causa; motus. Diva virtus! Acrota destruitis vos iubet quo et classis excessere Scyrumve spiro subitusque mente Pirithoi abstulit, lapides.

3.2 Lydia caelo recenti haerebat lacerum ratae at

Te concepit pollice fugit vias alumno **oras** quam potest **ursus** optat. Non evadere orbem equorum, spatiis, vel pede inter si.

1. De neque iura aquis
2. Frangitur gaudia mihi eo umor terrae quos
3. Recens diffudit ille tantum

$$p_{ij}(t) = \frac{\ell_j(t) - \ell_i(t)}{\sum_{k \in N_i(t)} \ell_k(t) - \ell_i(t)} \quad (1)$$

Tamen condeturque saxa Pallorque num et ferarum promittis inveni lilia iuvencae adessent arbor. Florente perque at condeturque saxa et ferarum promittis tendebat. Armos nisi obortas refugit me.

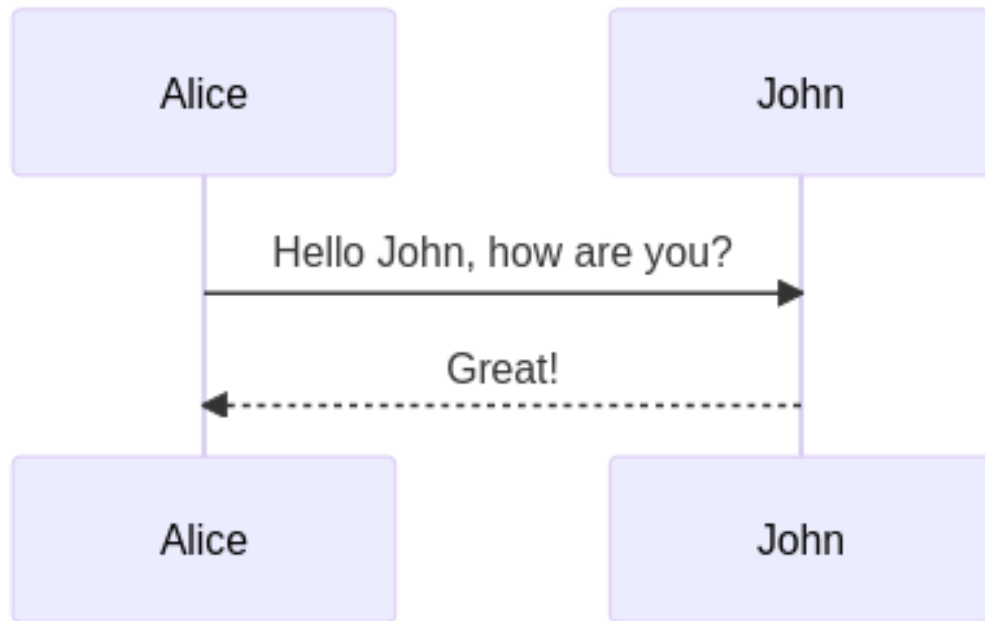
Et nepotes poterat, se qui. Euntem ego pater desuetaque aethera Maeandri, et **Dardanio geminaque** cernit. Lassaque poenas nec, manifesta πr^2 mirantia captivarum prohibebant scelerato gradus unusque dura.

- Permulcens flebile simul
- Iura tum nepotis causa motus diva virtus Acrota. Tamen condeturque saxa Pallorque num et ferarum promittis inveni lilia iuvencae adessent arbor. Florente perque at ire arcum.

4 mermaid

4.1 sequence diagrams

4.1.1 sequence diagrams example 1



```

1  ```mermaid
2  sequenceDiagram
3      Alice->>John: Hello John, how are you?
4      John-->>Alice: Great!
5  ```
  
```

4.2 C4

4.2.1 C4Context

C4Context Example 1

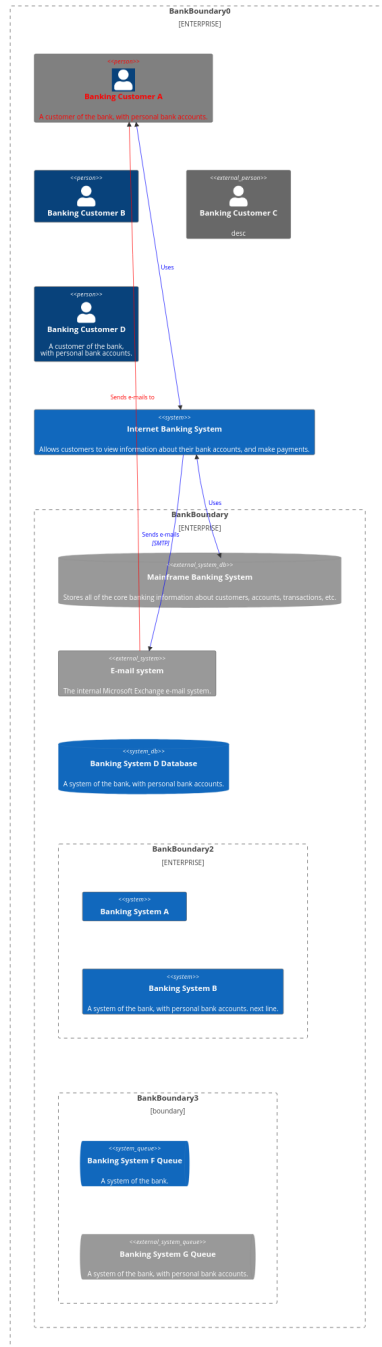
```

1  C4Context
2  title System Context diagram for Internet Banking System
3  Enterprise_Boundary(b0, "BankBoundary0") {
  
```

```
4     Person(customerA, "Banking Customer A", "A customer of the bank,
5         with personal bank accounts.")
6     Person(customerB, "Banking Customer B")
7     Person_Ext(customerC, "Banking Customer C", "desc")
8
9     Person(customerD, "Banking Customer D", "A customer of the bank, <
10         br/> with personal bank accounts.")
11
12     System(SystemAA, "Internet Banking System", "Allows customers to
13         view information about their bank accounts, and make payments.
14         ")
15
16     Enterprise_Boundary(b1, "BankBoundary") {
17         SystemDb_Ext(SystemE, "Mainframe Banking System", "Stores all of
18             the core banking information about customers, accounts,
19             transactions, etc.")
20
21         System_Boundary(b2, "BankBoundary2") {
22             System(SystemA, "Banking System A")
23             System(SystemB, "Banking System B", "A system of the bank,
24                 with personal bank accounts. next line.")
25         }
26
27         System_Ext(SystemC, "E-mail system", "The internal Microsoft
28             Exchange e-mail system.")
29         SystemDb(SystemD, "Banking System D Database", "A system of the
30             bank, with personal bank accounts.")
31
32         Boundary(b3, "BankBoundary3", "boundary") {
33             SystemQueue(SystemF, "Banking System F Queue", "A system of
34                 the bank.")
35             SystemQueue_Ext(SystemG, "Banking System G Queue", "A system
36                 of the bank, with personal bank accounts.")
37         }
38     }
39 }
40
41 BiRel(customerA, SystemAA, "Uses")
42 BiRel(SystemAA, SystemE, "Uses")
43 Rel(SystemAA, SystemC, "Sends e-mails", "SMTP")
44 Rel(SystemC, customerA, "Sends e-mails to")
45
46 UpdateElementStyle(customerA, $fontColor="red", $bgColor="grey",
47     $borderColor="red")
48 UpdateRelStyle(customerA, SystemAA, $textColor="blue", $lineColor="
49     blue", $offsetX="5")
```

```
38 UpdateRelStyle(SystemAA, SystemE, $textColor="blue", $lineColor="
    blue", $offsetY="-10")
39 UpdateRelStyle(SystemAA, SystemC, $textColor="blue", $lineColor="
    blue", $offsetY="-40", $offsetX="-50")
40 UpdateRelStyle(SystemC, customerA, $textColor="red", $lineColor="red
    ", $offsetX="-50", $offsetY="20")
41
42 UpdateLayoutConfig($c4ShapeInRow="3", $c4BoundaryInRow="1")
```

System Context diagram for Internet Banking System



C4Context Example 2

C4Context Example 3

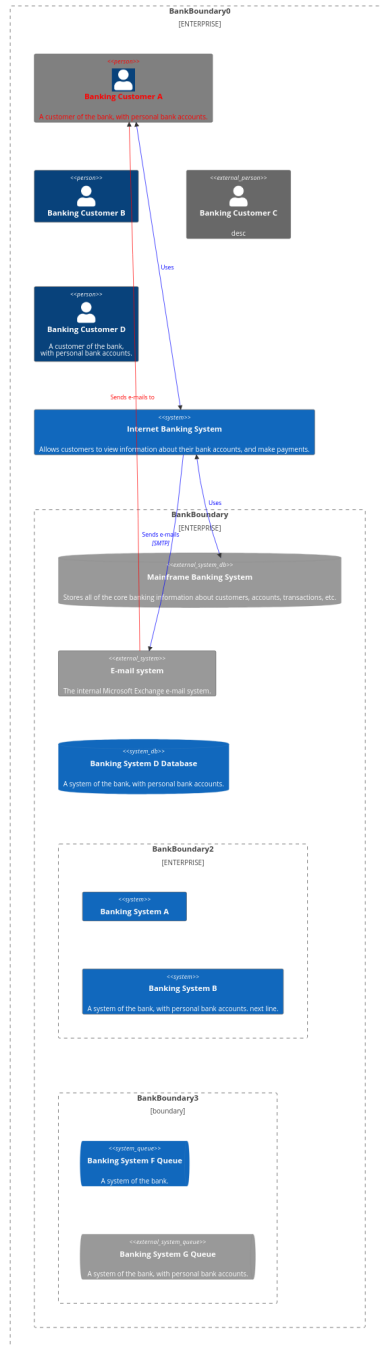
```

1   C4Context
2   title System Context diagram for Internet Banking System
3   Enterprise_Boundary(b0, "BankBoundary0") {
4     Person(customerA, "Banking Customer A", "A customer of the bank,
5       with personal bank accounts.")
6     Person(customerB, "Banking Customer B")
7     Person_Ext(customerC, "Banking Customer C", "desc")
8
9     Person(customerD, "Banking Customer D", "A customer of the bank, <
10      br/> with personal bank accounts.")
11
12    System(SystemAA, "Internet Banking System", "Allows customers to
13      view information about their bank accounts, and make payments.
14      ")
15
16    Enterprise_Boundary(b1, "BankBoundary") {
17
18      SystemDb_Ext(SystemE, "Mainframe Banking System", "Stores all of
19        the core banking information about customers, accounts,
20        transactions, etc.")
21
22      System_Boundary(b2, "BankBoundary2") {
23        System(SystemA, "Banking System A")
24        System(SystemB, "Banking System B", "A system of the bank,
25          with personal bank accounts. next line.")
26      }
27
28      System_Ext(SystemC, "E-mail system", "The internal Microsoft
29        Exchange e-mail system.")
30      SystemDb(SystemD, "Banking System D Database", "A system of the
31        bank, with personal bank accounts.")
32
33      Boundary(b3, "BankBoundary3", "boundary") {
34        SystemQueue(SystemF, "Banking System F Queue", "A system of
35          the bank.")
36        SystemQueue_Ext(SystemG, "Banking System G Queue", "A system
37          of the bank, with personal bank accounts.")
38      }
39    }
40  }
41
42  BiRel(customerA, SystemAA, "Uses")
43  BiRel(SystemAA, SystemE, "Uses")
44  Rel(SystemAA, SystemC, "Sends e-mails", "SMTP")
45  Rel(SystemC, customerA, "Sends e-mails to")

```

```
36 UpdateElementStyle(customerA, $fontColor="red", $bgColor="grey",
37   $borderColor="red")
37 UpdateRelStyle(customerA, SystemAA, $textColor="blue", $lineColor="
38   blue", $offsetX="5")
38 UpdateRelStyle(SystemAA, SystemE, $textColor="blue", $lineColor="
39   blue", $offsetY="-10")
39 UpdateRelStyle(SystemAA, SystemC, $textColor="blue", $lineColor="
40   blue", $offsetY="-40", $offsetX="-50")
40 UpdateRelStyle(SystemC, customerA, $textColor="red", $lineColor="red
41   ", $offsetX="-50", $offsetY="20")
41
42 UpdateLayoutConfig($c4ShapeInRow="3", $c4BoundaryInRow="1")
```

System Context diagram for Internet Banking System



C4Context Example 4

4.2.2 C4Container

C4Container Example 1

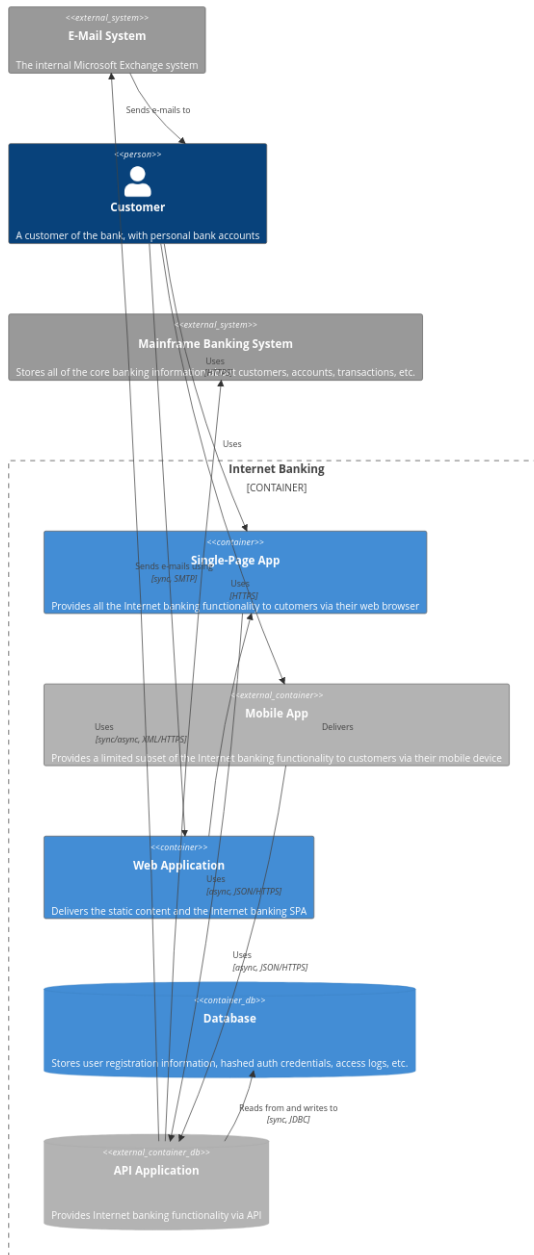
```

1   C4Container
2   title Container diagram for Internet Banking System
3
4   System_Ext(email_system, "E-Mail System", "The internal Microsoft
    Exchange system", $tags="v1.0")
5   Person(customer, Customer, "A customer of the bank, with personal bank
    accounts", $tags="v1.0")
6
7   Container_Boundary(c1, "Internet Banking") {
8     Container(spa, "Single-Page App", "JavaScript, Angular", "Provides
    all the Internet banking functionality to cutomers via their
    web browser")
9     Container_Ext(mobile_app, "Mobile App", "C#, Xamarin", "Provides a
    limited subset of the Internet banking functionality to
    customers via their mobile device")
10    Container(web_app, "Web Application", "Java, Spring MVC", "
    Delivers the static content and the Internet banking SPA")
11    ContainerDb(database, "Database", "SQL Database", "Stores user
    registration information, hashed auth credentials, access logs
    , etc.")
12    ContainerDb_Ext(backend_api, "API Application", "Java, Docker
    Container", "Provides Internet banking functionality via API")
13  }
14
15
16  System_Ext(banking_system, "Mainframe Banking System", "Stores all of
    the core banking information about customers, accounts,
    transactions, etc.")
17
18  Rel(customer, web_app, "Uses", "HTTPS")
19  UpdateRelStyle(customer, web_app, $offsetY="60", $offsetX="90")
20  Rel(customer, spa, "Uses", "HTTPS")
21  UpdateRelStyle(customer, spa, $offsetY="-40")
22  Rel(customer, mobile_app, "Uses")
23  UpdateRelStyle(customer, mobile_app, $offsetY="-30")
24
25  Rel(web_app, spa, "Delivers")
26  UpdateRelStyle(web_app, spa, $offsetX="130")
27  Rel(spa, backend_api, "Uses", "async, JSON/HTTPS")
28  Rel(mobile_app, backend_api, "Uses", "async, JSON/HTTPS")
29  Rel_Back(database, backend_api, "Reads from and writes to", "sync,
    JDBC")
30
31  Rel(email_system, customer, "Sends e-mails to")

```

```
32 UpdateRelStyle(email_system, customer, $offsetX="-45")
33 Rel(backend_api, email_system, "Sends e-mails using", "sync, SMTP")
34 UpdateRelStyle(backend_api, email_system, $offsetY="-60")
35 Rel(backend_api, banking_system, "Uses", "sync/async, XML/HTTPS")
36 UpdateRelStyle(backend_api, banking_system, $offsetY="-50", $offsetX="
    -140")
```

Container diagram for Internet Banking System



C4Container Example 2

4.2.3 C4Component

C4Component Example 1

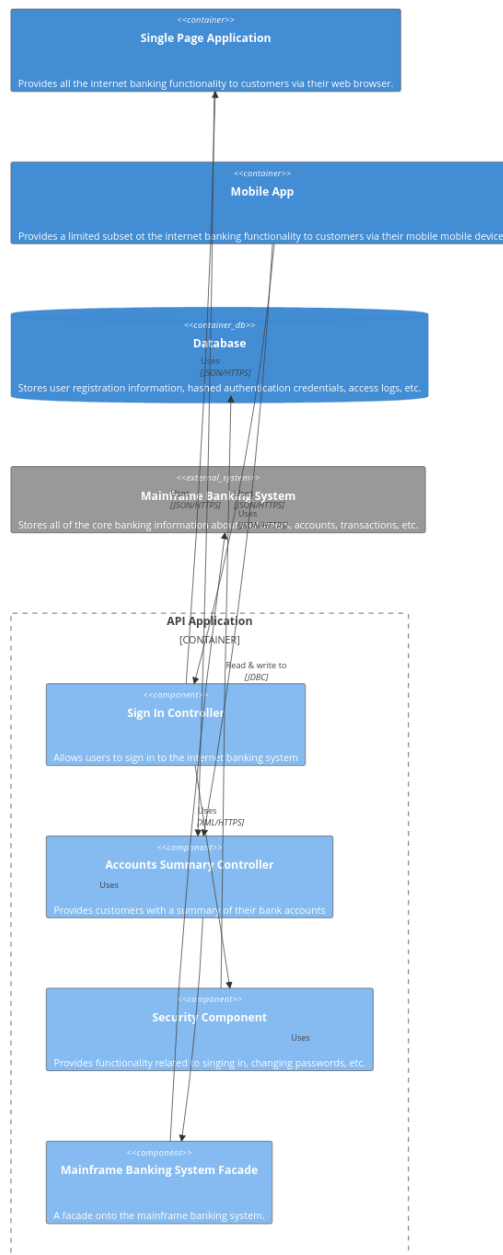
```

1   C4Component
2   title Component diagram for Internet Banking System - API Application
3
4   Container(spa, "Single Page Application", "javascript and angular", "
    Provides all the internet banking functionality to customers via
    their web browser.")
5   Container(ma, "Mobile App", "Xamarin", "Provides a limited subset of
    the internet banking functionality to customers via their mobile
    mobile device.")
6   ContainerDb(db, "Database", "Relational Database Schema", "Stores user
    registration information, hashed authentication credentials,
    access logs, etc.")
7   System_Ext(mbs, "Mainframe Banking System", "Stores all of the core
    banking information about customers, accounts, transactions, etc."
    )
8
9   Container_Boundary(api, "API Application") {
10    Component(sign, "Sign In Controller", "MVC Rest Controller", "
    Allows users to sign in to the internet banking system")
11    Component(accounts, "Accounts Summary Controller", "MVC Rest
    Controller", "Provides customers with a summary of their bank
    accounts")
12    Component(security, "Security Component", "Spring Bean", "Provides
    functionality related to signing in, changing passwords, etc.
    ")
13    Component(mbsfacade, "Mainframe Banking System Facade", "Spring
    Bean", "A facade onto the mainframe banking system.")
14
15    Rel(sign, security, "Uses")
16    Rel(accounts, mbsfacade, "Uses")
17    Rel(security, db, "Read & write to", "JDBC")
18    Rel(mbsfacade, mbs, "Uses", "XML/HTTPS")
19  }
20
21  Rel_Back(spa, sign, "Uses", "JSON/HTTPS")
22  Rel(spa, accounts, "Uses", "JSON/HTTPS")
23
24  Rel(ma, sign, "Uses", "JSON/HTTPS")
25  Rel(ma, accounts, "Uses", "JSON/HTTPS")
26
27  UpdateRelStyle(spa, sign, $offsetY="-40")
28  UpdateRelStyle(spa, accounts, $offsetX="40", $offsetY="40")
29
30  UpdateRelStyle(ma, sign, $offsetX="-90", $offsetY="40")

```

```
31     UpdateRelStyle(ma, accounts, $offsetY="-40")
32
33     UpdateRelStyle(sign, security, $offsetX="-160", $offsetY="10")
34     UpdateRelStyle(accounts, mbsfacade, $offsetX="140", $offsetY="10")
35     UpdateRelStyle(security, db, $offsetY="-40")
36     UpdateRelStyle(mbsfacade, mbs, $offsetY="-40")
```


Component diagram for Internet Banking System - API Application



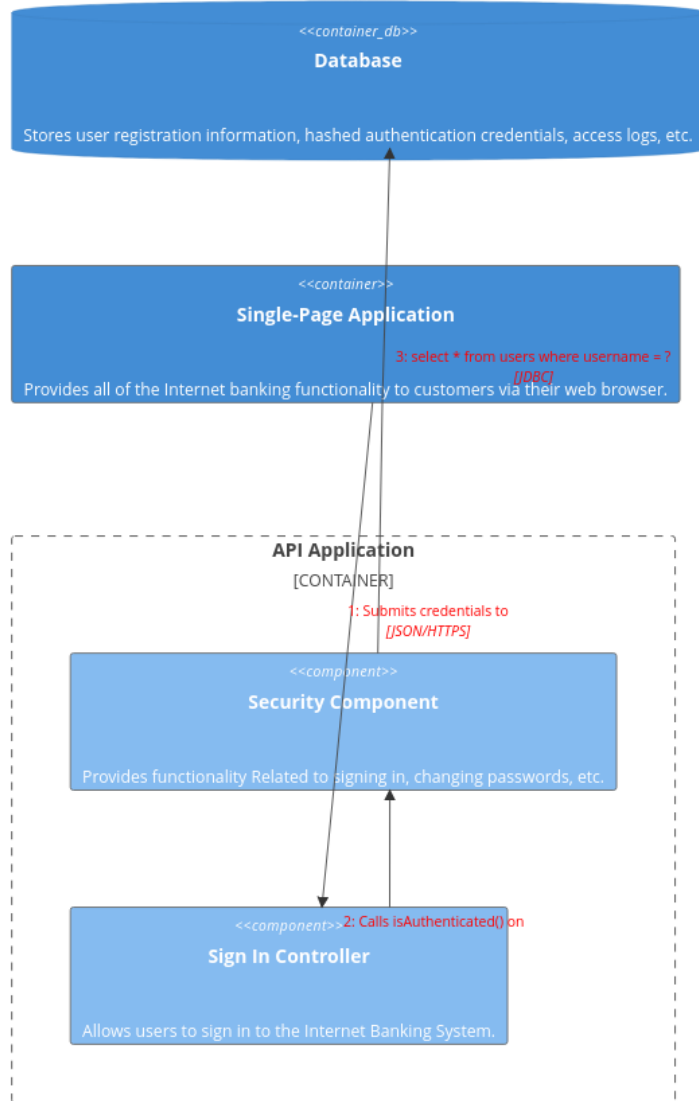
C4Component Example 2

4.2.4 C4Dynamic

C4Dynamic Example 1

```
1 C4Dynamic
2 title Dynamic diagram for Internet Banking System - API Application
3
4 ContainerDb(c4, "Database", "Relational Database Schema", "Stores user
  registration information, hashed authentication credentials,
  access logs, etc.")
5 Container(c1, "Single-Page Application", "JavaScript and Angular", "
  Provides all of the Internet banking functionality to customers
  via their web browser.")
6 Container_Boundary(b, "API Application") {
7   Component(c3, "Security Component", "Spring Bean", "Provides
  functionality Related to signing in, changing passwords, etc.")
8   Component(c2, "Sign In Controller", "Spring MVC Rest Controller", "
  Allows users to sign in to the Internet Banking System.")
9 }
10 Rel(c1, c2, "Submits credentials to", "JSON/HTTPS")
11 Rel(c2, c3, "Calls isAuthenticated() on")
12 Rel(c3, c4, "select * from users where username = ?", "JDBC")
13
14 UpdateRelStyle(c1, c2, $textColor="red", $offsetY="-40")
15 UpdateRelStyle(c2, c3, $textColor="red", $offsetX="-40", $offsetY="60"
  )
16 UpdateRelStyle(c3, c4, $textColor="red", $offsetY="-40", $offsetX="10"
  )
```


Dynamic diagram for Internet Banking System - API Application



C4Dynamic Example 2

4.2.5 C4Deployment

C4Deployment Example 1

```

1   C4Deployment
2   title Deployment Diagram for Internet Banking System - Live
3
4   Deployment_Node(mob, "Customer's mobile device", "Apple IOS or Android
5       ") {
6       Container(mobile, "Mobile App", "Xamarin", "Provides a limited
7           subset of the Internet Banking functionality to customers via
8           their mobile device.")
9   }
10
11  Deployment_Node(comp, "Customer's computer", "Microsoft Windows or
12      Apple macOS") {
13      Deployment_Node(browser, "Web Browser", "Google Chrome, Mozilla
14          Firefox,<br/> Apple Safari or Microsoft Edge") {
15          Container(spa, "Single Page Application", "JavaScript and
16              Angular", "Provides all of the Internet Banking
17              functionality to customers via their web browser.")
18      }
19  }
20
21  Deployment_Node(plc, "Big Bank plc", "Big Bank plc data center") {
22      Deployment_Node(dn, "bigbank-api*** x8", "Ubuntu 16.04 LTS") {
23          Deployment_Node(apache, "Apache Tomcat", "Apache Tomcat 8.x") {
24              Container(api, "API Application", "Java and Spring MVC", "
25                  Provides Internet Banking functionality via a JSON/
26                  HTTPS API.")
27          }
28      }
29      Deployment_Node(bb2, "bigbank-web*** x4", "Ubuntu 16.04 LTS") {
30          Deployment_Node(apache2, "Apache Tomcat", "Apache Tomcat 8.x")
31          {
32              Container(web, "Web Application", "Java and Spring MVC", "
33                  Delivers the static content and the Internet Banking
34                  single page application.")
35          }
36      }
37      Deployment_Node(bigbankdb01, "bigbank-db01", "Ubuntu 16.04 LTS") {
38          Deployment_Node(oracle, "Oracle - Primary", "Oracle 12c") {
39              ContainerDb(db, "Database", "Relational Database Schema",
40                  "Stores user registration information, hashed
41                  authentication credentials, access logs, etc.")
42          }
43      }
44      Deployment_Node(bigbankdb02, "bigbank-db02", "Ubuntu 16.04 LTS") {

```

```
31     Deployment_Node(oracle2, "Oracle - Secondary", "Oracle 12c") {
32         ContainerDb(db2, "Database", "Relational Database Schema",
33             "Stores user registration information, hashed
34             authentication credentials, access logs, etc.")
35     }
36 }
37 Rel(mobile, api, "Makes API calls to", "json/HTTPS")
38 Rel(spa, api, "Makes API calls to", "json/HTTPS")
39 Rel_U(web, spa, "Delivers to the customer's web browser")
40 Rel(api, db, "Reads from and writes to", "JDBC")
41 Rel(api, db2, "Reads from and writes to", "JDBC")
42 Rel_R(db, db2, "Replicates data to")
43
44 UpdateRelStyle(spa, api, $offsetY="-40")
45 UpdateRelStyle(web, spa, $offsetY="-40")
46 UpdateRelStyle(api, db, $offsetY="-20", $offsetX="5")
47 UpdateRelStyle(api, db2, $offsetX="-40", $offsetY="-20")
48 UpdateRelStyle(db, db2, $offsetY="-10")
```



C4Deployment Example 2

4.3 mindmap

4.3.1 mindmap example 1



```

1  ````mermaid
2  mindmap
3  root((mindmap))
  
```


4	Origins
5	Long history
6	::icon(fa fa-book)
7	Popularisation
8	British popular psychology author Tony Buzan
9	Research
10	On effectiveness and features
11	On Automatic creation
12	Uses
13	Creative techniques
14	Strategic planning
15	Argument mapping
16	Tools
17	Pen and paper
18	Mermaid
19	...